



## NEW TOOLS

### 43350 PNEUMATIC FAN CLUTCH WRENCH SET, 10 PC.

Does the Job Much Faster than Conventional Fan Clutch Wrenches.

Set includes nine driving wrenches that fit Ford, GM, VW, BMW, Chrysler and International. Driving wrench sizes include: 7/8", 32mm, 36mm, 40mm Thin, 47mm, 1-7/8", 2", new 52mm for 2019 and newer Duramax, and 2-1/8" for newer International. Use with an air hammer.

43350 Pneumatic Fan Clutch Wrench Set, 10 pc. Molded case. Shipping wt. 9 lb. 14 oz.

43290 52mm Driving Wrench                      43340 2-1/8" Driving Wrench

43370 Handle Assembly                         43380 32mm Driving Wrench

43390 36mm Driving Wrench                   43410 1-7/8" Driving Wrench

43420 2" Driving Wrench                        43430 7/8" Driving Wrench

43440 40mm Driving Wrench                   43530 47mm Driving Wrench

43360 Case for 43350



### 50240 MAGNETIC FUNNEL HOLDER

Translucent Funnel Holder Accommodates Various Style and Size Funnels and Stores the Funnel Without a Mess.

Two strong neodymium magnets hold the funnel on ferrous metal surfaces without slipping. Holder collects residual fluids as they drain into the 12 oz. reservoir. Simply grab and twist the holder to break loose from the surface to pour out any excess fluids. Funnel sits slightly angled so it will clear any mounting surface. Interior ribs prevent the funnel from touching the fluids at the bottom of the holder. Made of polypropylene for durability.

50240 Magnetic Funnel Holder. Hang card. Shipping wt. 7 oz.



### 28800 DIGITAL TEST LIGHT WITH LOAD TESTER

3-30 Volts DC Dual Polarity Digital Test Light that Can Also Apply Load to Get an Instant Voltage Drop Reading.

Works as a regular test light and when you push the button on the tool it applies an 800mA load at 12V DC to easily check for voltage drop on circuits. The display will indicate the voltage drop when the button is pushed. Displays voltage under load to tell if circuit has problems like corrosion, resistance, or faulty connections. 48" cord with heavy-duty alligator clamp for secure connections. Not computer safe with load applied. Not for use on airbags.

28800 Digital Test Light with Load Tester. Skin-packed. Shipping wt. 6 oz.

28810 Halogen Bulb, 36V 50 watts



## 59350 STRETCH BELT INSTALLER-DOUBLE PULLEYS

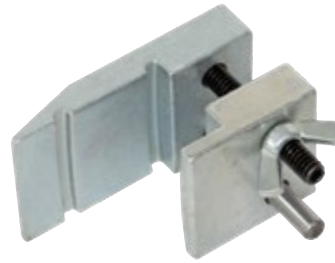
Used to Install the Main Stretch Belt on Extra Deep Double Pulleys.

Inside of the tool is designed to fit securely on the front side of pulley. The tool holds the belt on the pulley as the engine is rotated clockwise to install the belt. Helps prevent damage to the belt or pulley during installation. Works on 2011 and newer Ford 3.5L EcoBoost and 3.7L engines, as well as 2019 and newer GM 5.3L and 6.2L engines.

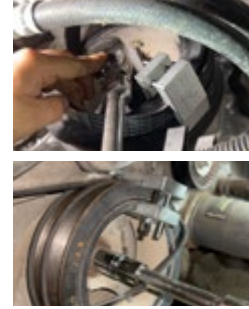
59350 Stretch Belt Installer-Double Pulleys. Skin-packed. Shipping wt. 11 oz.

59340 Inner Clamp

59360 Outer Clamp



YouTube



## 64180 ACTUATOR MOTOR WRENCH SET, 5PC.

Supersedes 64100

YouTube

Toothless, Infinite Ratchet and Hinged Handle Design Make it Easier to Remove and Replace Fasteners on Small, Electric HVAC Motors.

These motors control air flow into the vehicle and are commonly found in confined areas under the vehicle dash. The ratchet can be flipped to switch from clockwise to counterclockwise drive. Set includes 5.5mm socket (new), 7mm socket (new), 8mm socket and 1/4" Square Drive Adapter for use with 1/4" sockets and bit holders. Can also be used in other hard-to-reach applications. Vinyl holder for sockets and adapter for storage.

64180 Actuator Motor Wrench Set, 5pc. Skin-packed. Shipping wt. 9 oz.

61210 1/4" Square Drive

64110 Actuator Motor Wrench

64170 8mm Socket

64190 5.5mm Socket

64220 7mm Socket

64240 Vinyl Holder

64270 Vinyl Holder with 4 bits



## 40740 DIESEL INJECTOR PULLER KIT

Injector Puller Handles a Variety of Injectors Found in Cummins and Duramax Engines.

The kit comes with three application specific attachments. Remove the shoulder bolt to switch between the attachments. Two-jaw design firmly grips the injector while it is being removed by the slide hammer. Applications: Duramax 2001-2010, LB7, LLY, LBZ and LMM. 2011 and newer LML engines. Cummins 2003 to 2018 5.9L and 6.7L.

40740 Diesel Injector Puller Kit. Molded case. Shipping wt. 7 lb.

30890 Self Locking Nut 1-1/4"-20

40760 Slide Hammer Assembly

40770 Duramax Adapter Assembly

40840 Duramax Adapter Holder

40850 Slide Hammer Adapter

40860 LML Adapter

40870 .50 Spacer

40880 .75 Spacer

40890 Duramax Adapter

40960 5/16"-20 Shoulder Bolt

40970 Cummins Jaw Assembly

41260 Case for 40740



YouTube

## 89090 SWIVEL-GRIPPER™ AIR FRESHENER

Great for Use Anywhere that Needs a Little Freshening Up.

Made with premium essential oils for a long lasting Black Diamond scent.

89090 Swivel-Gripper Air Freshener. Hang card. Shipping wt. 4 oz.

