

40100 HUB REMOVER

Time Saving Tool That Safely Removes Frozen Hub Assemblies Without Damaging Other Suspension Components.

Fits on most 5, 6 and 8 lug hub assemblies found on cars and trucks. Bolt the 1/2" thick driving plate to the hub using the hardened washers and existing lug nuts. Insert the hardened threaded forcing screw to push against a solid surface to loosen the hub assembly. To completely remove hub the forcing screw must push from at least two different solid points.

40100 Hub Remover. Boxed. Shipping wt. 6 lb. 9 oz.

40080 Washer

40090 Threaded Insert

40110 Hub Remover Plate

43670 Screw Assembly



50240 MAGNETIC FUNNEL HOLDER

Translucent Funnel Holder Accommodates Various Style and Size Funnels and Stores the Funnel Without a Mess.

Two strong neodymium magnets hold the funnel on ferrous metal surfaces without slipping. Holder collects residual fluids as they drain into the 12 oz. reservoir. Simply grab and twist the holder to break loose from the surface to pour out any excess fluids. Funnel sits slightly angled so it will clear any mounting surface. Interior ribs prevent the funnel from touching the fluids at the bottom of the holder. Made of polypropylene for durability.

50240 Magnetic Funnel Holder. Hang card. Shipping wt. 7 oz.



28800 DIGITAL TEST LIGHT WITH LOAD TESTER

3-30 Volts DC Dual Polarity Digital Test Light that Can Also Apply Load to Get an Instant Voltage Drop Reading.

Works as a regular test light and when you push the button on the tool it applies an 800mA load at 12V DC to easily check for voltage drop on circuits. The display will indicate the voltage drop when the button is pushed. Displays voltage under load to tell if circuit has problems like corrosion, resistance, or faulty connections. 48" cord with heavy-duty alligator clamp for secure connections. Not computer safe with load applied. Not for use on airbags.

28800 Digital Test Light with Load Tester. Skin-packed. Shipping wt. 6 oz.

28810 Halogen Bulb, 36V 50 watts



43350 PNEUMATIC FAN CLUTCH WRENCH SET, 10 PC.

Does the Job Much Faster than Conventional Fan Clutch Wrenches.

Set includes nine driving wrenches that fit Ford, GM, VW, BMW, Chrysler and International. Driving wrench sizes include: 7/8", 32mm, 36mm, 40mm Thin, 47mm, 1-7/8", 2", new 52mm for 2019 and newer Duramax, and 2-1/8" for newer International. Use with an air hammer.

43350 Pneumatic Fan Clutch Wrench Set, 10 pc. Molded case. Shipping wt. 9 lb. 14 oz.

43290 52mm Driving Wrench 43340 2-1/8" Driving Wrench

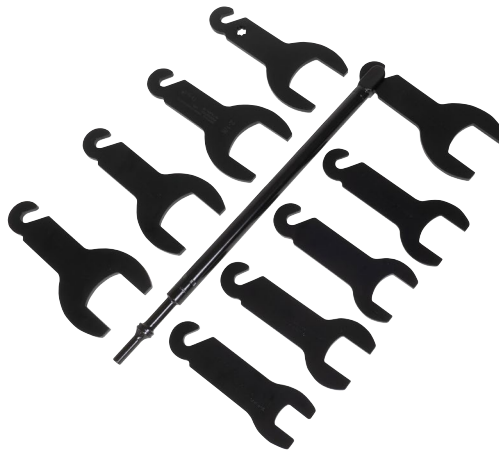
43370 Handle Assembly 43380 32mm Driving Wrench

43390 36mm Driving Wrench 43410 1-7/8" Driving Wrench

43420 2" Driving Wrench 43430 7/8" Driving Wrench

43440 40mm Driving Wrench 43530 47mm Driving Wrench

43360 Case for 43350

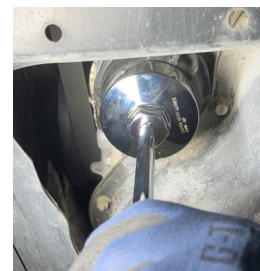


65170 65MM 14 FLUTE END CAP WRENCH FOR TOYOTA

Universal Oil Filter Wrench Allows for Easy Removal of All Toyota and Lexus Cartridge Oil Filters.

Forged steel with a bright chrome plated finish. Use with 3/8" square drive or 1" wrench.

65170 65mm 14 Flute End Cap Wrench for Toyota. Box. Shipping wt. 9 oz.



12950 FLIP SOCKET SET, 7 PC.

Double-Ended Flip Sockets Offer 2 Hex Sizes in Each Socket for the Removal of Standard and Damaged Lug Nuts Found on Many Vehicles.

6-point impact sockets are made from chrome moly steel with a black oxide finish. Set includes a 1/2" drive extension, 17mm/17.5mm, 19mm/19.5mm, 21mm/21.5mm, 22mm/22.5mm, 27mm/27.5mm and a deep thin-walled 19mm/21mm socket. The 19mm/21mm socket includes a plastic sleeve that prevents scratching the wheels. Comes in blow molded case for storage.

12950 Flip Socket Set, 7 pc. Molded case. Shipping wt. 3 lb. 5 oz.

12860 Extension, 1/2" 12870 19mm/21mm Socket, Thin Wall

12880 19mm/19.5mm Socket 12910 22mm/22.5mm Socket

12920 21mm/21.5mm Socket 12960 27mm/27.5mm Socket

12990 17mm/17.5mm Socket 13070 Case for 12950



35170 POCKET PRY BARS, 2 PC.

Pocket Sized Pry Bars with Many Vehicle Applications.

For use when removing seals, electrical connectors, plastic clips, o-rings, plastic caps, interior trim pieces, metal and plastic retainers. The 1/8" and 3/16" square shaft pry bars each have a pocket clip and are 4.5" long. The 1/8" pry bar has a magnet in the top of the handle that will lift 1 lb.

35170 Pocket Pry Bars, 2 pc. Skin-packed. Shipping wt. 3. oz.

35110 1/8" Pry Bar with Magnet

35120 3/16" Pry Bar





NEW TOOLS

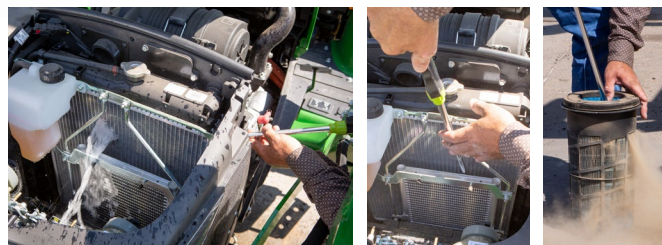
88500 RADIATOR-GENIE®



Water and Air Cleaning Wands for High Efficiency Cooling Systems and All Types of Radiators.

For radiators and other hard-to-reach places. Fast and easy adjustable pressure cleaning wands. Patented fan head, U.S. Patent 8,573,237, increases pressure and working width. Special sized tube to access confined areas. Interchangeable air fitting comes with M style connector, but can be used with any style. Extends the life of your equipment by keeping them clean and running cool. Cleans where nothing else can. Allows more time running your machines with less down time. The Radiator Genie is so versatile, it can be used on a variety of machines that operate in dirty outdoor environments.

88500 Radiator Genie Hang card. Shipping wt. 1 lb. 1 oz.



Interchangeable Air Fitting Includes M Style, But Can Be Used With Any Style Plug



Patented Fan Head Increases Pressure and Working Width
U.S. Patent 8,573,237

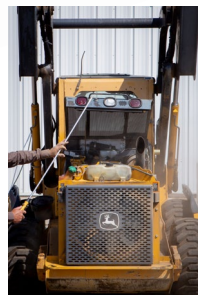
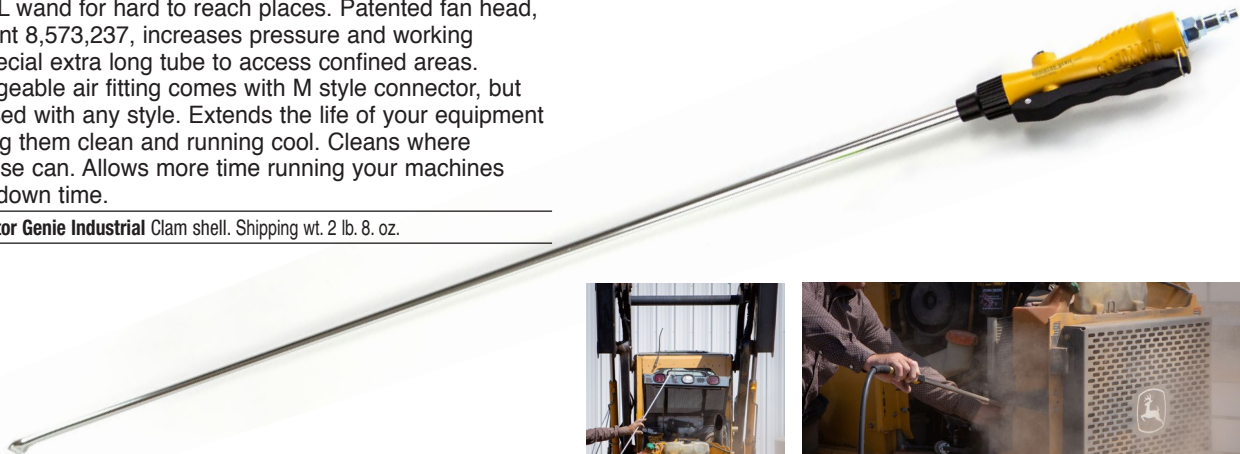
88600 RADIATOR-GENIE® INDUSTRIAL



Water and Air Cleaning In One Wand for High Efficiency Cooling Systems on Large Industrial Equipment.

50 inch XL wand for hard to reach places. Patented fan head, U.S. Patent 8,573,237, increases pressure and working width. Special extra long tube to access confined areas. Interchangeable air fitting comes with M style connector, but can be used with any style. Extends the life of your equipment by keeping them clean and running cool. Cleans where nothing else can. Allows more time running your machines with less down time.

88600 Radiator Genie Industrial Clam shell. Shipping wt. 2 lb. 8. oz.



35470 DOUBLE-ENDED TRIM REMOVER

The Hardened Tips Provide Strength and Access to Panels in Tight Areas.

Double-ended tool with radius on one end and narrow square tip on the other end. Strong heat-treated alloy steel tool is ideal for prying car interior panels.

35470 Double-Ended Trim Remover. Skin-packed. Shipping wt. 4 oz.



55040 FUSE PULLER & TERMINAL CLEANER, 2 PC.

Double-Ended Tools Designed to Remove Corrosion in Blade Fuse Applications on Both Mini and ATO Sizes.

Combines a puller for removing the blade fuse from the fuse box, and an insertion head to clean the female contact points of the circuit without damage. Made from nylon plastic for strength and durability.

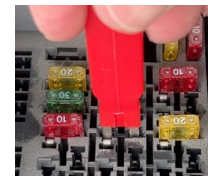
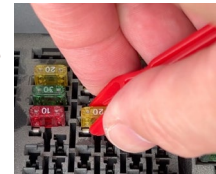
55040 Fuse Puller & Terminal Cleaner, 2 pc. Skin-packed. Shipping wt. 3 oz.

55050 Mini Fuse Puller & Terminal Cleaner

55070 ATO Fuse Puller & Terminal Cleaner



YouTube



40030 BRAKE SPRING BAR

Replaces Brake Shoes on Heavy-Duty Tractor and Trailer S-Cam Brakes.

Slip the hook into retaining spring loop and press down against the axle to remove spring. Lever action against the axle eliminates need for wrenches, pry bars and screwdrivers. Tool is 18" long with a molded handle for comfort. The tool has a black oxide finish.

40030 Brake Spring Bar. Boxed. Shipping wt. 1 lb 7 oz.

40040 Spring Hook



YouTube



40740 DIESEL INJECTOR PULLER KIT

Injector Puller Handles a Variety of Injectors Found in Cummins and Duramax Engines.

The kit comes with three application specific attachments. Remove the shoulder bolt to switch between the attachments. Two-jaw design firmly grips the injector while it is being removed by the slide hammer. Applications: Duramax 2001-2010, LB7, LLY, LBZ and LMM. 2011 and newer LML engines. Cummins 2003 to 2018 5.9L and 6.7L.

40740 Diesel Injector Puller Kit. Molded case. Shipping wt. 7 lb.

30890 Self Locking Nut 1-1/4"-20 40760 Slide Hammer Assembly

40770 Duramax Adapter Assembly 40840 Duramax Adapter Holder

40850 Slide Hammer Adapter 40860 LML Adapter

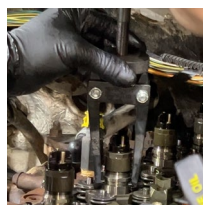
40870 .50 Spacer 40880 .75 Spacer

40890 Duramax Adapter 40960 5/16"-20 Shoulder Bolt

40970 Cummins Jaw Assembly 41260 Case for 40740



YouTube





NEW TOOLS

83500 PINCH WELD SCRAPER SET, 4 PC.

Designed For Easy and Safe Removal of Residual Urethane Adhesive on Vehicle After Glass Has Been Removed.

Winged blades help prevent damage and scratches to the pinch weld. Helps leave the correct thickness of adhesive for re-bonding. Includes: 1-1/2" straight, 1/2", 3/4", and 1" winged blades.

83500 Pinch Weld Scraper Set, 4 pc. Label. Shipping wt. 9. oz.

83510 Pinch Weld Scraper, Small

83520 Pinch Weld Scraper, Medium

83530 Pinch Weld Scraper, Large

83540 Pinch Weld Scraper, Straight



83770 REARVIEW MIRROR INSTALLER PLIERS

Used on Spring Loaded Rearview Mirrors when Re-Installing.

The tips are dipped with thin plastic to prevent damage when squeezing the mirror onto the mounting bracket. Handles feature a spring and double drip grips for comfort.

83770 Rearview Mirror Installer Pliers. Skin-packed. Shipping wt. 7 oz.

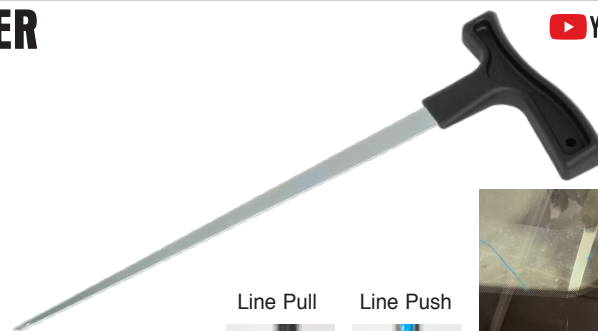


83550 PISTOL GRIP WIRE INSERTER

Ergonomic Handle Designed for Easy Insertion of Metal Fiber Cutting Wire Through Polyurethane.

Tip has slotted end to push and a hole to pull wire through windshield bonding. Also allows wire to be inserted closer to the pinch weld. The blade is 10-1/2" long to reach into tight spaces.

83550 Pistol Grip Wire Inserter. Boxed. Shipping wt. 6 oz.



Line Pull

Line Push



83220 MOLDING CLIP REMOVAL TOOL

Quickly Disengage Windshield Molding Clips.

Slide the tool under the windshield molding until it hooks the retaining clip. A simple twist of the wrist pulls the clip out a bit which releases the molding from the clip. Can also be used to remove metal clips on under hood cowl. Double dipped grip for comfort.

83220 Molding Clip Removal Tool. Skin-packed. Shipping wt. 5 oz.



NEW TOOLS



83700 TRIM REMOVAL SET, 5 PC.

Designed to Remove Fasteners on Door Panels and Other Trim Pieces on a Vehicle Without Damage.

The five-piece set comes with both U notch and V notch ends to fit numerous different style and size panel clips. The smooth shaft is made from stainless steel and provides a fulcrum point to lift the clips. Tools can be stored in plastic tray.

83700 Trim Removal Set, 5 pc. Plastic Tray with Lid. Shipping wt. 1 lb. 12 oz.

83710 U-Notch Removal Tool 83720 V-Notch Removal Tool

83730 V-Notch Removal Tool, Small 83740 U-Notch Removal Tool, Small

83750 Door Panel Removal Tool



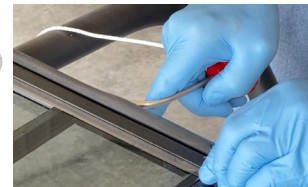
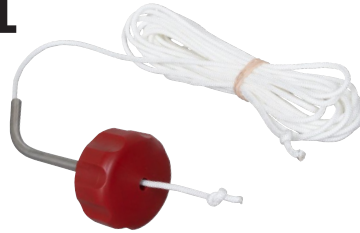
83660 GASKET ROPE INSERT TOOL

Seats the Rope Under the Lip and Into Groove of the Windshield Gasket.

The tool has a large, comfortable handle and angled tube to help "rope in" rubber windshield gaskets. Comes with 20 feet of 1/8" nylon rope that will reach around large windshields.

83660 Gasket Rope Insert Tool. Skin-Packed. Shipping wt. 4 oz.

83690 1/8" Nylon Rope, 20 Ft.



83640 1-1/2" STAINLESS STRAIGHT BLADE SCRAPER

83650 1-1/2" STAINLESS OFFSET BLADE SCRAPER

Rigid Stainless-Steel Blade Extends Through The Handle to the Metal Capped End for Strength And Durability.

The 1-1/2" blade width with a soft grip handle and hammer end is good for removing windshield stops and rust on disc brake caliper brackets. Also removes carbon from turbo vanes, urethane, gaskets, and many other applications. The offset blade design works in hard-to-reach places.

83640 1-1/2" Stainless Straight Blade Scraper. Skin-Packed. Shipping wt. 5 oz.

83650 1-1/2" Stainless Offset Blade Scraper. Skin-Packed. Shipping wt. 5 oz



80420 SELF LOCKING RUBBER GASKET TOOL

Rounded and Polished Steel Tip slides the Self-Locking Part of the Rubber Gasket Into the Locking Channel.

The shape of the steel tip is designed without sharp edges that could cut the gasket and features the proper shape needed to perform the job. Ergonomic handle provides the necessary leverage needed.

80420 Self Locking Rubber Gasket Tool. Mini pouch. Shipping wt. 5 oz.



49600 SPRAY GUN HOLDER

Securely Attaches to Ferrous Metal Surfaces Like Spray Booth Walls, Mixing Room Walls, Workstation Cabinets and More.

Magnet keeps the holder from sliding when loaded. Comes with holes so it can be mounted to a wall. Can also be used to hold other tools.

49600 Spray Gun Holder. Boxed. Shipping wt. 1 lb. 6 oz.





NEW TOOLS

59350 STRETCH BELT INSTALLER-DOUBLE PULLEYS

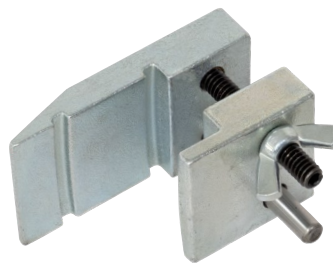
Used to Install the Main Stretch Belt on Extra Deep Double Pulleys.

Inside of the tool is designed to fit securely on the front side of pulley. The tool holds the belt on the pulley as the engine is rotated clockwise to install the belt. Helps prevent damage to the belt or pulley during installation. Works on 2011 and newer Ford 3.5L EcoBoost and 3.7L engines, as well as 2019 and newer GM 5.3L and 6.2L engines.

59350 Stretch Belt Installer-Double Pulleys. Skin-packed. Shipping wt. 11 oz.

59340 Inner Clamp

59360 Outer Clamp



64180 ACTUATOR MOTOR WRENCH SET, 5PC.

Supersedes 64100



Toothless, Infinite Ratchet and Hinged Handle Design Make it Easier to Remove and Replace Fasteners on Small, Electric HVAC Motors.

These motors control air flow into the vehicle and are commonly found in confined areas under the vehicle dash. The ratchet can be flipped to switch from clockwise to counterclockwise drive. Set includes 5.5mm socket (new), 7mm socket (new), 8mm socket and 1/4" Square Drive Adapter for use with 1/4" sockets and bit holders. Can also be used in other hard-to-reach applications. Vinyl holder for sockets and adapter for storage.

64180 Actuator Motor Wrench Set, 5pc. Skin-packed. Shipping wt. 9 oz.

61210 1/4" Square Drive

64110 Actuator Motor Wrench

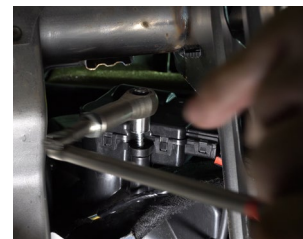
64170 8mm Socket

64190 5.5mm Socket

64220 7mm Socket

64240 Vinyl Holder

64270 Vinyl Holder with 4 bits



72610 MANIFOLD DRILL TEMPLATE FOR FORD 3.5L ECOBOOST

Removes Broken Exhaust Manifold Bolts on Ford 3.5L EcoBoost Motors Without Damaging the Cylinder Head.

Tapered bolts center base plate over bolt holes and slip fit bushing allows you to move from hole to hole without moving base plate. The screw extractor is then used to remove the broken bolt. Includes bushing to drill to tap size when extractor cannot be used.

72610 Manifold Drill Template for Ford 3.5L EcoBoost.

Molded case. Shipping wt. 3 lb. 7 oz.

68690 Stud Extractor

71410 Alignment Bolt, 1 pc.

71420 Tap Guide, 8mm

71450 Lock Screw

71460 1/8" Drill Bushing

71470 3/16" Drill Bushing

71480 17/64" Drill Bushing

71520 1/8" Cobalt Drill

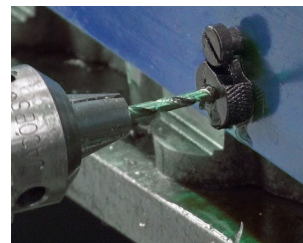
71530 3/16" Cobalt Drill

71540 17/64" Cobalt Drill

72620 3.5L Ford Drill Plate

72630 3.5L Ford 1-21/32" Drill Gauge

72640 Case for 72610

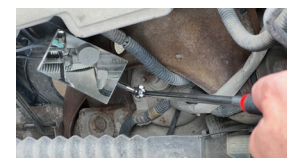


32010 TELESCOPING MIRROR 2" X 3-1/2"

2" x 3-1/2" Mirror Swivels to Any Position.

Telescopes from 6-3/4" to 40-1/2".

32010 Telescoping Mirror 2" x 3-1/2". Skin-packed. Shipping wt. 4 oz.



NEW TOOLS



38800 NO SPLATTER PAD WITH SUPPORTS

No Splatter Pad and Steel Supports Protect Work Area From Messy Fluid Splatter.

Insert the two steel support braces and splatter pad into your existing 17972 4.5 Gallon Oval Drain Pan, Black or 17982 4.5 Gallon Oval Drain Pan, Green. The porous material of the splatter pad allows fluid to quickly pass through into the pan. Pad material resists engine oil, transmission fluid, coolant, brake fluid, brake cleaner, gear oil and other solvents. Important: Not for coolants or fluids that will be recycled in the vehicle. Material fibers of the pad may contaminate the fluid.

38800 No Splatter Pad with Supports. Hang card. Shipping wt. 1 lb.

38770 No Splatter Pad

38810 Support, 1 pc.



25200 BRAKE PISTON WIND BACK TOOL, 2 & 3 PIN

Double-Ended Adapter Features a 2 Pin Side and 3 Pin Side. Easily Adjustable and Used to Rewind Brake Pistons Back Into the Caliper.

Slim profile design and fully adjustable rotating body aligns the pin location for engaging into the brake caliper piston face on most domestic and import vehicles. Adapter will work on right or left hand rewind calipers. 2 Pin range is from 1/2" (12.7mm) to 1-1/2" (38mm). 3 Pin range is from 1" (25.4mm) to 1-11/16 (43mm). Use with a 3/8" square drive.

25200 Brake Piston Wind Back Tool, 2 & 3 Pin. Skin-packed. Shipping wt. 6 oz.



2 PIN SIDE



3 PIN SIDE

77070 24MM HARMONIC BALANCER SOCKET

This Heavy-Duty Impact Socket is Designed with More Than Three Times the Standard Socket Mass to Direct More Energy to Removing the Bolt.

Can be used on GM LS engines that use a 24mm hex pulley damper bolt or other 24mm applications. Heat-treated, impact-quality alloy steel. Use with 1/2" drive.

77070 24mm Harmonic Balancer Socket. Boxed. Shipping wt. 2 lb.



89090 SWIVEL-GRIPPER™ AIR FRESHENER

Great for Use Anywhere that Needs a Little Freshening Up.

Made with premium essential oils for a long lasting Black Diamond scent.

89090 Swivel-Gripper Air Freshener. Hang card. Shipping wt. 4 oz.

