



NEW TOOLS

24980 SPILL-FREE® FUNNEL, 19 PC.

Includes New Threaded Adapter for 2017 & Newer Toyota and Lexus V6 Turbo with V35A Engine.

Clear funnel allows a quick visual check of the coolant from across the shop. Comes with a lid to keep contaminants out as well as store the caps and adapters. Eliminates trapped air pockets which usually cause erratic cooling system and heater performance. It controls the proper amount of coolant entering system and enables unattended filling of the cooling system. The funnel eliminates squeaky belts caused by coolant overflow and protects the environment. Six different colored radiator adapters and six caps to fit most cars, pickups, trucks and many farm tractors. Two straight extensions and two 45° elbows for angled and hard-to-reach applications.

24780 Spill-Free® Funnel, 18 pc. Label. Shipping wt. 1 lb. 4 oz.

21920 Lid	22060 Toyota Threaded Adapter, Dark Red (NEW)
22210 Funnel	22240 Red Adapter B
22280 45° Elbow	22300 Fluid Stopper
22330 Large Cap A	22340 Medium Cap B
22410 Small Cap C	23130 Black Adapter A
23140 Blue Adapter E	23150 Green Adapter C
23160 Purple Adapter D	23180 VW / Audi / Porsche Cap
24640 Threaded Cap D for GM	24670 Extension
24690 Threaded Cap F for Ford	

Supersedes
24780

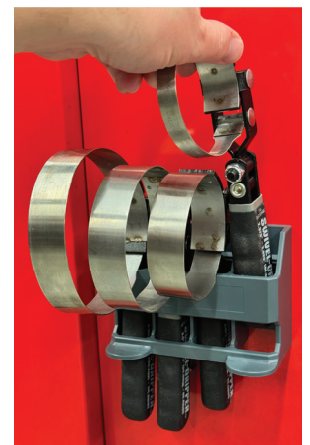
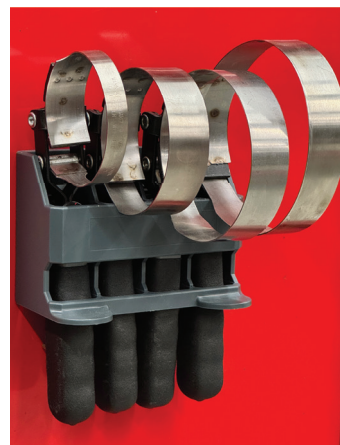


58370 MAGNETIC FILTER WRENCH HOLDER

Magnetic Holder with Four Slots to Store and Organize Standard and Heavy-Duty Filter Wrenches.

Four high-strength neodymium magnets on the back provide secure hold on ferrous metal surfaces. Screw holes allow permanent mounting, and integrated feet let the holder stand upright on flat work surfaces. Made of ABS plastic for strength and durability.

58370 Magnetic Filter Wrench Holder. Box. Shipping wt. 6 oz.



41750 STRUT SPREADER

This Compact Strut Clamp Spreader Tool Allows Suspension Struts and Ball Joints to Be Held Open to Make Removal and Installation Easier On Many Vehicles.

Double-sided design allows it to be used on different strut mounts and on upper and lower ball joints. Opening range is 1/8" to 1/2". Forged steel provides strength and durability. For use with a 10mm wrench or socket.

41750 Strut Spreader. Box. Shipping wt. 9 oz.

41710 Top Body

41720 Bottom Body with Dowel Pins

41760 Pusher Bolt



60090 HEAVY-DUTY CHAIN WRENCH, 26" CHAIN 14-1/2" HANDLE

Wrench Features Aggressive Teeth for Gripping on Filters, Canisters and Other Cylindrical Objects Up to 7-1/2" in Diameter.

14-1/2" Forged I-beam handle with 26" chain allows use in either direction for tightening or loosening. Grabs on two chain links for strength. Plated finish wipes clean easily and resists rust or corrosion.

60090 Heavy-Duty Chain Wrench. Box. Shipping wt. 2 lb. 13 oz.

